

Connecting RS-232C PC Control

Attach RS-232C cable cross-type to the supplied Din/D-Sub RS-232C.

Set the RS-232C communication settings on the PC to match the communication conditions listed.

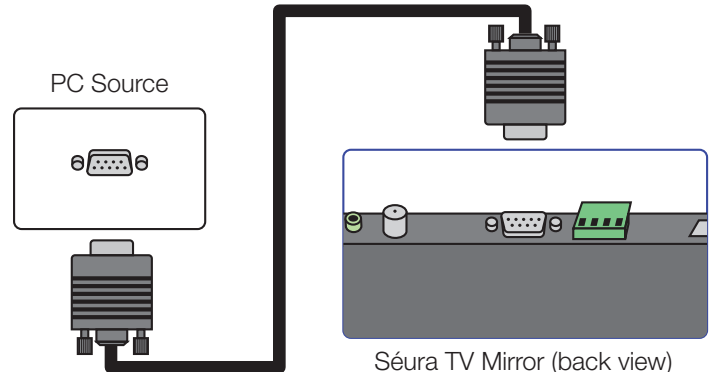
COMMUNICATION CONDITIONS

Model: 19.3

Baud rate:	9600 bps
Data length:	8 bits
Parity bit:	None
Stop bit:	1 bit
Flow control	None

Model: 19.3 ALT / Hydra / 10.3

Baud rate:	115200 bps
Data length:	8 bits
Parity bit:	None
Stop bit:	1 bit
Flow control	None



Send the control commands from the PC via the RS-232C connector.

1. The LCD operates according to the received command and sends a response message to the PC. Do not send multiple commands at the same time.
2. Wait until the PC receives the confirmation response before sending the next command.

COMMAND TABLE

COMMANDS NOT INDICATED HERE ARE NOT GUARANTEED TO OPERATE

CONTROL ITEM		COMMAND		PARAMETER		CONTROL CONTENTS			
POWER ON COMMAND SETTING		R	S	P	W	0	1	OFF ON	THE POWER ON COMMAND REJECTED THE POWER ON COMMAND ACCEPTED
POWER SETTING		P	O	W	R	0	1	POWER OFF POWER ON	IT SHIFTS TO STANDBY POWER ON
INPUT SELECTION	TOGGLE	I	T	G	D	X		(TOGGLE)	IT INPUT- SWITCHES BY THE TOGGLE. (IT IS THE SAME AS AN INPUT CHANGE KEY)
	TV	I	T	V	D	0			IT INPUT- SWITCHES TO TV. (A CHANNEL REMAINS AS IT IS. (LAST MEMORY))
	INPUT 1-5	I	A	V	D	*		INPUT TERMINAL NUMBER	IT INPUT- SWITCHES TO INPUT 1-INPUT 5. (1 AV) (2 S-V) (3 COMP) (4 VGA) (5 HDMI)
VOLUME		V	O	L	M	*	*	VOLUME 0-99	
VIEW MODE		W	I	D	E	*		1: S.STRETCH [AV] 2: SIDE BAR [AV], 3: ZOOM [AV], 4: STRETCH [AV] 5: NORMAL [PC] 6: ZOOM[PC] 7: STRETCH[PC] 8: DOT BY DOT[PC][AV] 9: FULL SCREEN [AV]	ALTHOUGH IT CAN CHOOSE NOW, IT IS TOGGLE OPERATION IN INSIDE. ONLY AVAILABLE WHEN 4:3 SIGNAL IS BEING INPUT. ONLY AVAILABLE WHEN 4:3 SIGNAL IS BEING INPUT. ONLY AVAILABLE WHEN 4:3 SIGNAL IS BEING INPUT. [AV] ONLY AVAILABLE WHEN 1080i/p IS BEING INPUT.
MUTE		M	U	T	E	*		1: ON, 2: OFF	
SLEEP TIMER		O	F	T	M	*		0: OFF, 1: OFF TIMER-30 MIN., 2: OFF TIMER-60 MIN., 3: OFF TIMER-90 MIN., 4: OFF TIMER-120 MIN.	
CHANNEL	DIRECT	D	A	2	P	*	*	(0100-9999) (EX: 50.2=50 02)	DIGITAL AIR (TWO-PART NUMBERS, 3-DIGIT PLUS 2-DIGIT)
		D	C	2	U	*	*	(1-999) (EX: 50.2=050 002)	DIGITAL CABLE (TWO -PART NUMBERS, 3-DIGIT PLUS 3 DIGIT)
	CHANNEL UP	C	H	U	P	X		THE CHANNEL NUMBER OF TV +(X)	IF IT IS NOT TV DISPLAY, IT WILL INPUT-SWITCH TO TV. (SAME FUNCTION AS CH ▲)
	CHANNEL DOWN	C	H	D	W	X		THE CHANNEL NUMBER OF TV -(X)	IF IT IS NOT TV DISPLAY, IT WILL INPUT-SWITCH TO TV. (SAME FUNCTION AS CH ▼)

NOTE:

UNDERScores (_) WITHIN THE PARAMETER COLUMN REPRESENT A SINGLE SPACE (hex 20)

ASTERISKS(*) WITHIN THE PARAMETER COLUMN REPRESENT A VALUE WITHIN THE RANGE INDICATED IN THE CONTROL CONTENTS

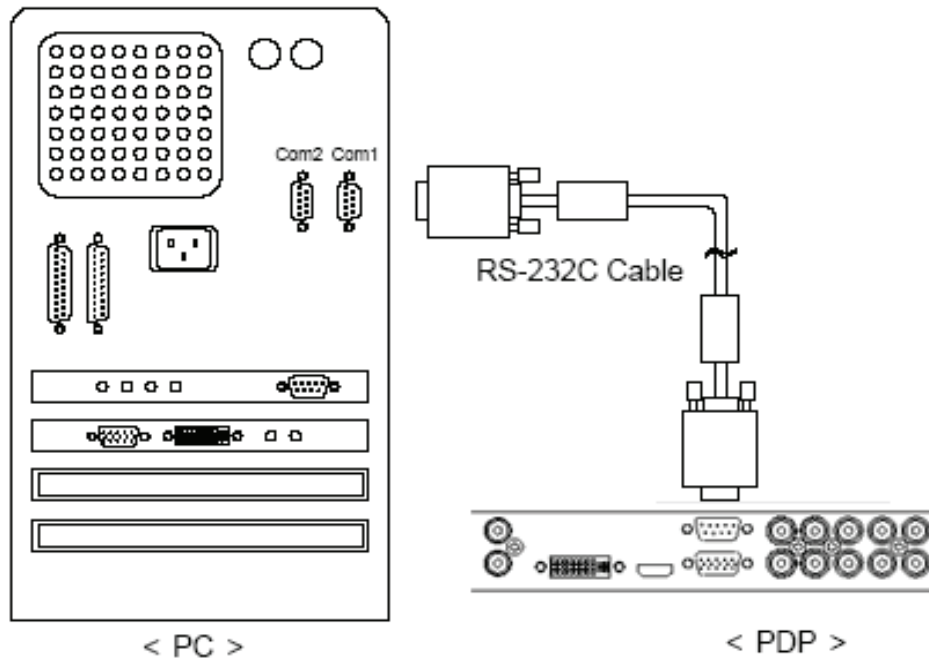
X WITHIN THE PARAMETER COLUMN REPRESENTS A VALUE WITHIN THE RANGE INDICATED IN THE CONTROL CONTENTS

* ALL COMMANDS MUST END WITH A LINE FEED (hex 0A)

Control PDP/LCD through Serial Port

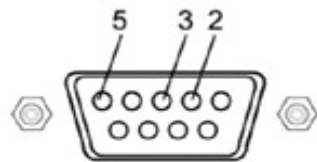
1. How to connect external equipment.

- Connect the serial port of external equipment to the RS-232C jack of the monitor back panel
- RS-232C Cables not included with the monitor.
- The remote control and LCD&PDP front panel buttons(except main power) doesn't operate when controlling LCD&PDP set by PC
- **Only In case AC Power should be OFF & ON after changing to new set ID, it can be commanded by newly changed set ID**



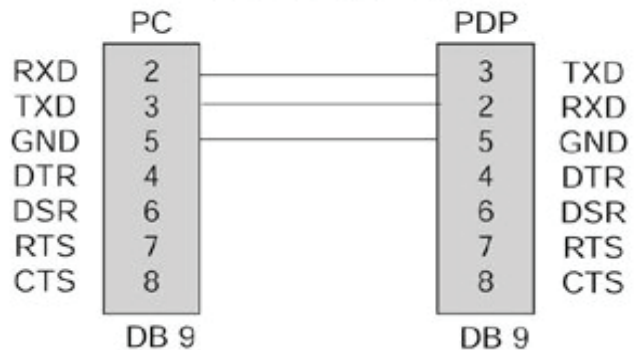
- Type of connector : D-Sub 9Pin **female to female**

No.	Pin Name
1	No connection
2	RXD (Receive data)
3	TXD (Transmit data)
4	No connection
5	GND
6	No connection
7	No connection
8	No connection
9	No connection



- Cable Side (female) -

3-wire configuration

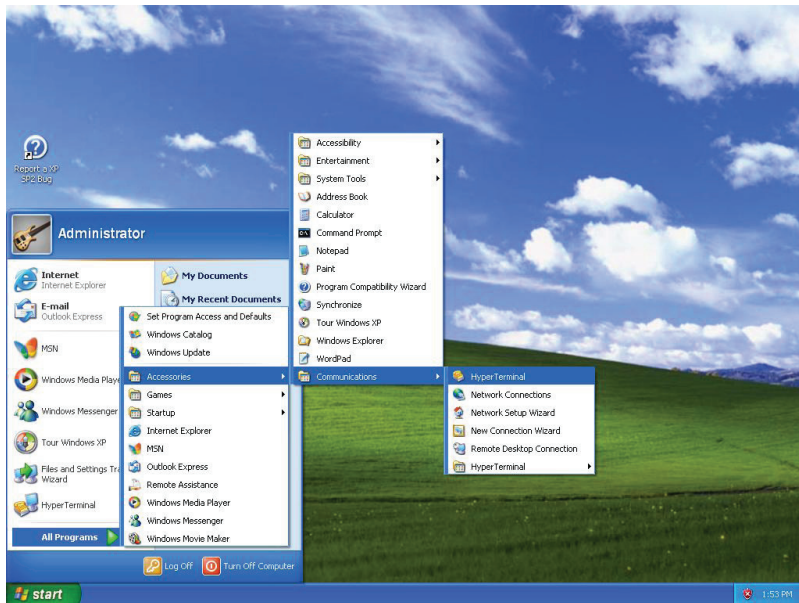


[NOTE] Use a Crossed(reverse) Cable.

Example Setup Using Hyper Terminal

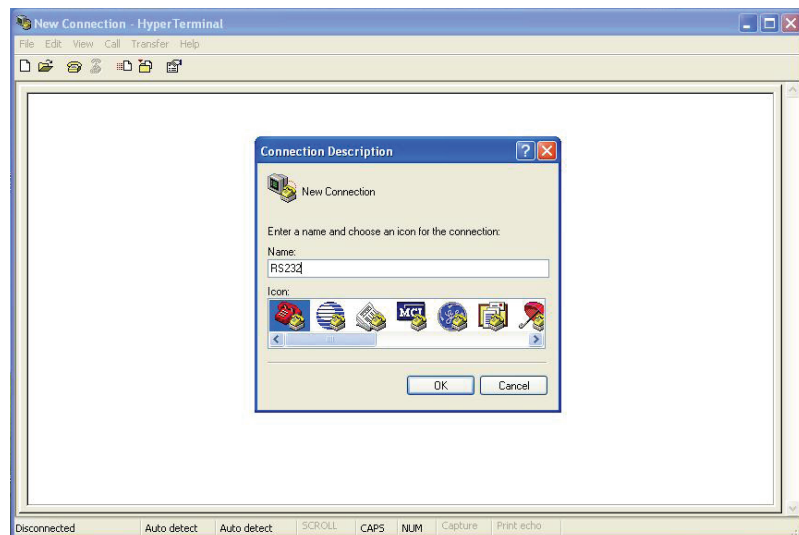
1.

Typical Windows Path for Hyper Terminal



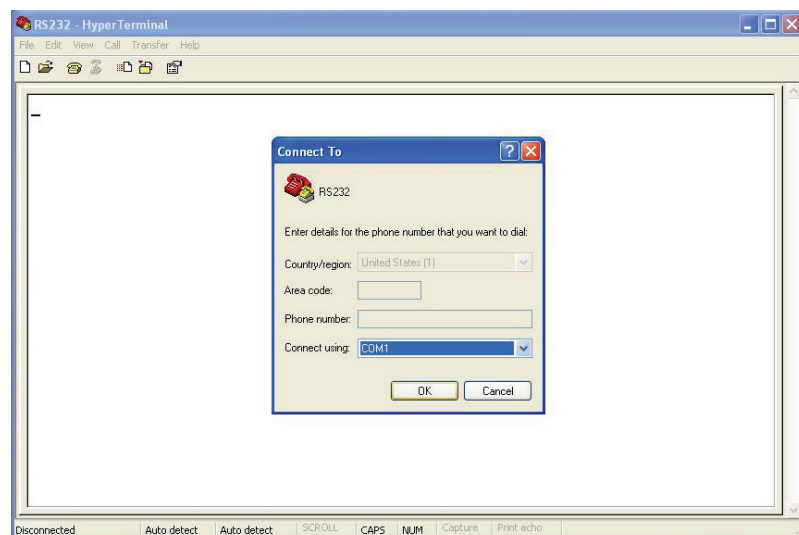
2.

Name Hyper Terminal Setup.
(Can save upon exit.)



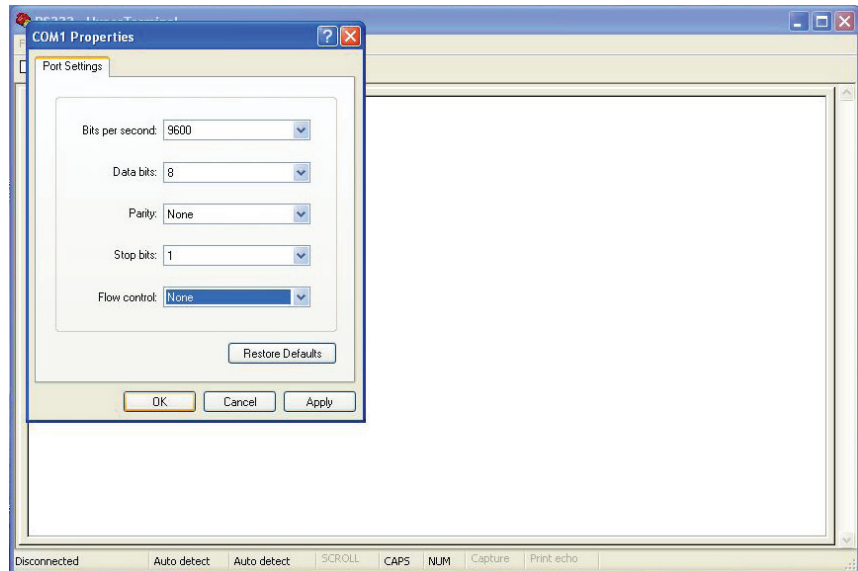
3.

Select PC Connection Port.



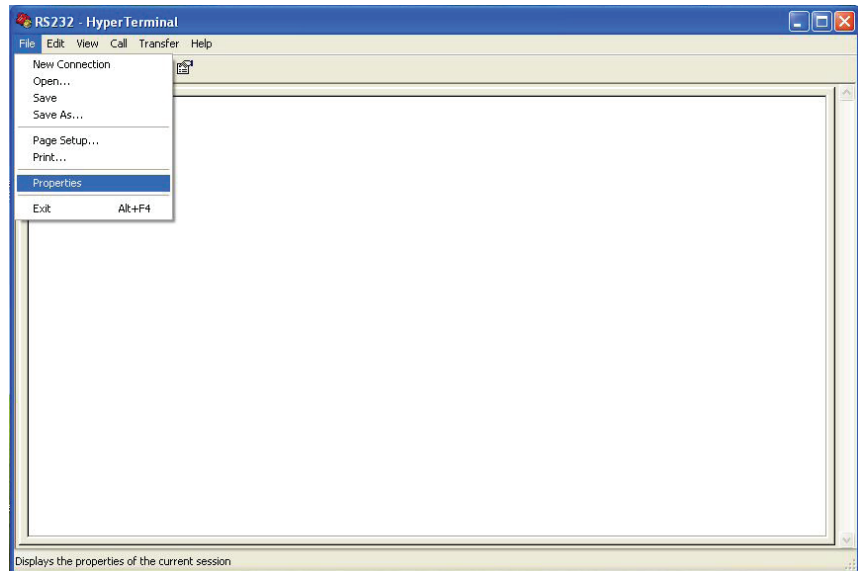
4.

Set Communication Conditions. Click **Apply** then **OK**.



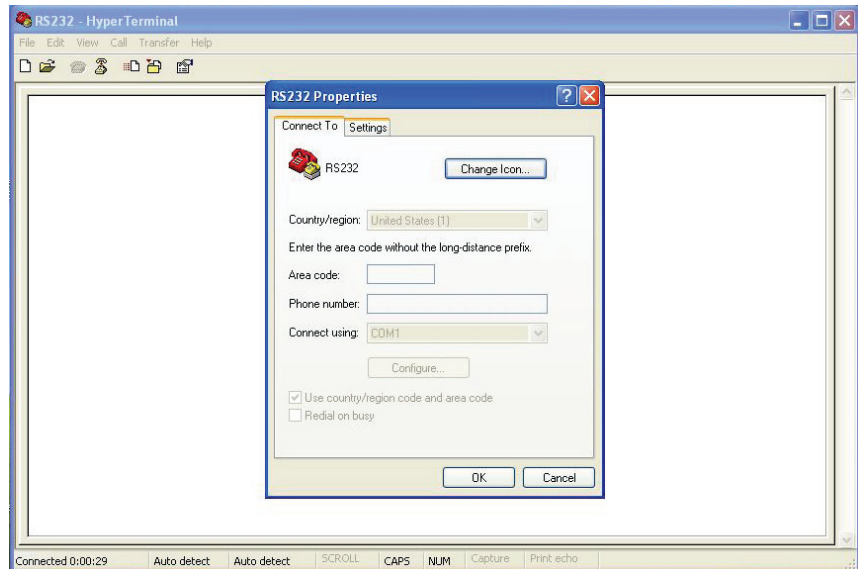
5.

Property (IES) Setup for ASCII. Select **File** then click **Properties**.



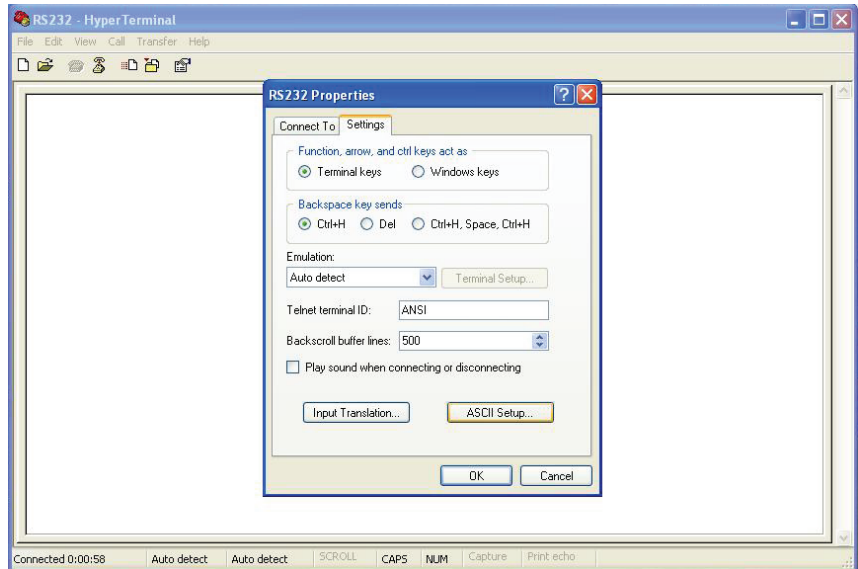
6.

Select the **Settings** Tab.



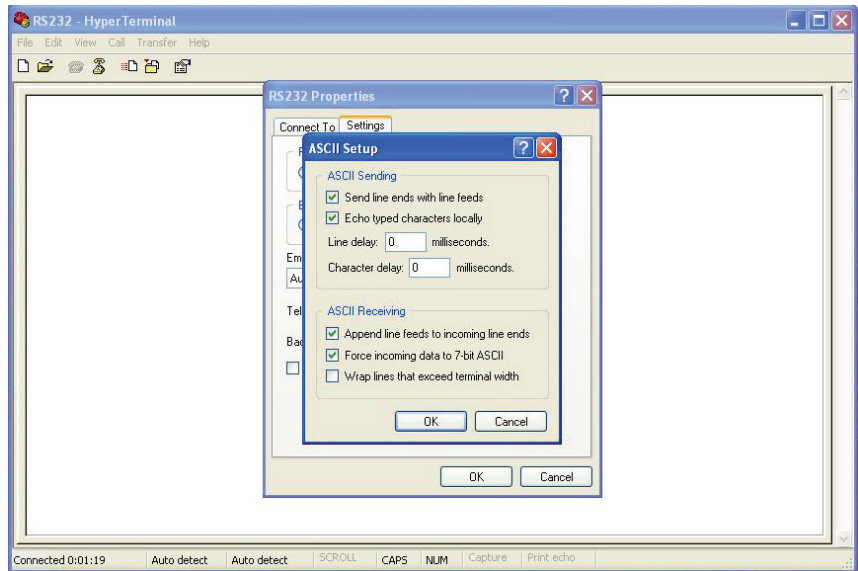
7.

Select **ASCII Setup**.



8.

Check the selections as shown.



9.

In Caps:

ENTER

RSPW1_ _ _

ENTER

Turn on RS-232 Control.

Results in **“OK”** Response.

(If this results in **“ERR”**

response, repeat

command)

